

Model 2800H



Heavy Duty H-class vacuum cleaner for large quantities of fine dust with the possibility of collection in both Longopac and directly into container. Dust free emptying and emptying during operation also possible.

Well qualified for the construction industry, the hire industry and other industries dealing with large quantities of fine or health-hazardous dust. E.g. asbestos removal and together with floor grinding machines and also groove cutting machines.

The RONDA® 2800H is available with many collection / emptying systems depending on the customer requests and the tasks to be solved by the machine. The basic machine is supplied without collection / emptying system. This system is always to be ordered together with the machine in order to get a complete machine ready to start according to the survey next page.

Technical Data

Blow through motor	3 x 1100 W
Voltage.....	110/230/380 V
Data of the installed motors:	
- Vacuum, max.....	2550 mmWc / 25 kPa
- Airflow, max	162 l/sec. / 580 m³/h
Airflow at the hose coupling (5 m hose).....	83 l/sec. / 300 m³/h
Noise level (ISO 11201)	<70 dB(A)
Pre-filter	1,87 m²
HEPA filter	2,2 m²
Height (transport/operation).....	1495/1765 mm
Width	715 mm
Length/depth.....	800 mm
Weight without accessories	65 kg
Container coupling.....	ø 50 mm
Length of cord.....	8 m

- Large suction power - 3 motors
- Multi-tube filter technology → continuous suction power
- H-class (filtration 99.995%)
- Cyclone effect
- Filter cleaning during operation
- Static electricity dissipation
- Copes with both cement and wood dust
- Flexible and thought-through collection
 - Longopac
 - Container
- Possibility of emptying during operation
- Possibility of dust free emptying
- Easy to handle
- Robust metal frame with large wheels
- Telescopic system for low transport height
- Hour-meter

RONDA® Vacuum Cleaner

Choice of Collection / Emptying System

Collection Container in Several Sizes

1. The RONDA® 2800H can be supplied with containers in several different sizes - depending on the capacity wanted and the weight of the materials collected.

Longopac Dispenser

2. The best dispenser in the market for Longopac bag cassettes. After having placed the bag cassette in the dispenser, you lock one end with a rubber ring and the other end is pulled over the edge of the cassette. The end of the bag is closed with a cable tie. The dispenser is pushed back into the machine and turned a little. The machine is ready for use.
The dispenser is supplied incl. 1 x 22 m Longopac bag.

Flap Valve Without Locking Mechanism

3. When using the Longopac collection system for collecting eg. threads or shavings, it is useful to install a flap valve in stead of the metal grille of the Longopac dispenser, to hold back the bag.



Choose the Basic Machine + one of below 6 combinations

Basic machine

The RONDA® 2800H basic machine is combined with one or more of the above units. See the 6 most frequently used combinations to the right.

110 V - Product no. 82.16.2817
230 V - Product no. 82.16.2800
380 V - Product no. 82.16.2803



RONDA® 2800H with a 40 litres container.
Well qualified if you want to collect dust etc. directly into a container.



RONDA® 2800H with a 65 litres container.
Collection of large quantities of dust directly into a container, when you work with slightly voluminous dust, such as wood dust.

Ready-to-go RONDA® 2800H with Longopac

RONDA® 2800H complete with Longopac dispenser with grille and 1 x 22 m Longopac bag - ready to start.
(Equivalent to combination no. 3)

230 V - Product No. 82.16.2823

40 litres container
Product No. 81.79.2797

65 litres container
Product No. 81.77.3983

*) The Longopac dispensers 81.89.0075 and 81.89.0076 are supplied incl. 1 x 22 m Longopac bag.



4



5

Flap valve with Locking Mechanism

4. The flap valve is used if you want to continue to work during the emptying. The flap is locked, and the Longopac can be replaced while the dust sucked up in the meantime will remain in a buffer above the flap valve until the flap valve is opened again. The flap valve can also be locked in connection with the emptying or the transport of the machine, if you want to prevent the dust from falling out of the machine. The flap valve is also well qualified if you want to collect threads, shavings or the like as the Longopac dispenser needs no steel grating when you use a flap valve.

Adapter Ring with Hose for Vacuum

5. This unit is used to create low pressure on the outside of the bag, which is necessary if you want to protect the plastic bag with a plastic container so that no sharp objects will tear a hole in the bag. This will often be necessary if the machine is used for health-hazardous dust.



3



4



5



6

RONDA® 2800H with Longopac.
Well qualified for cement and other fine and heavy dust that you want to collect in a plastic bag (Longopac).
As standard, the machine is equipped with a Longopac dispenser with grille, but the machine can also be supplied with a flap valve without locking mechanism and a dispenser without grille.

Longopac dispenser with grille
Product No. 81.89.0075*

Longopac dispenser without grille
Product No. 81.89.0076*
Flap valve without locking mechanism
Product No. 81.89.0133

RONDA® 2800H with Longopac, where the plastic bag is protected by a container.
Well qualified for health hazardous dust where you want the plastic bag to be protected by a metal container.

Adapter ring with hose for vacuum
Product No. 85.68.0027
Longopac dispenser without grille
Product No. 81.89.0076*
40 litres container
Product No. 81.79.2797

RONDA® 2800H with Longopac and flap valve for dust free emptying and/or emptying during operation.
Well qualified for large tasks where you want to be able to empty the machine without stopping the collection, or if you want dust free emptying for instance in case of health-hazardous dust. This solution can also be used if you collect threads etc.

Flap valve with locking mechanism
Product No. 81.89.0070
Longopac dispenser without grille
Product No. 81.89.0076*

RONDA® 2800H with Longopac, flap valve and container for protection of the Longopac bag.
The ultimate solution for health-hazardous dust. You will get dust free emptying, and the Longopac bag will be protected against sharp objects by a plastic container.

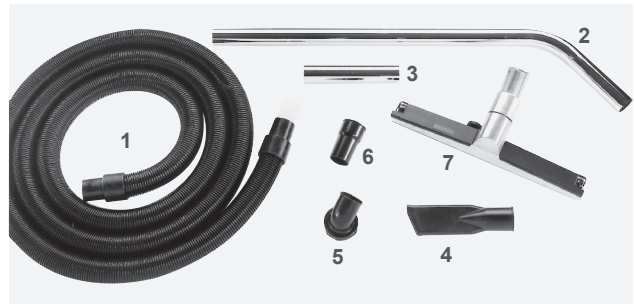
Adapter ring with hose for vacuum
Product No. 85.68.0027
Flap valve with locking mechanism
Product No. 81.89.0070
Longopac dispenser without grille
Product No. 81.89.0076*
25 litres container
Product No. 81.77.3985

Model 2800H

Standard Accessories

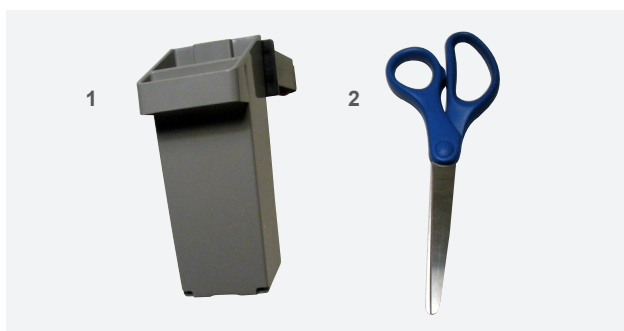
50 mm professional's set (antistatic) ø 50 80.43.5025

- | | |
|-----------------------------------------------|------------|
| 1. Plastic hose 5m, ø50mm bayonet-coupling .. | 84.74.5012 |
| 2. Tube with bend..... | 80.52.5000 |
| 3. Metal tube 0.25 m | 80.52.5020 |
| 4. Crevice nozzle | 80.34.5000 |
| 5. Round brush | 80.34.5001 |
| 6. Plastic adapter | 80.34.5002 |
| 7. All-purpose floor nozzle B-500..... | 84.38.5010 |



Standard Filters

- | | |
|-------------------------------------------|------------|
| 1. Multi-tube filter | 84.67.1098 |
| 2. HEPA-filter | 84.67.5037 |
| 3. Longopac bags, 1 packet 4 x 22 m | 84.64.2800 |



Optional Extras

- | | |
|------------------------------------------------|------------|
| 1. Dispenser for cable ties and scissors | 81.97.0069 |
| 2. Scissors | 81.97.0067 |
- Factory mounted separate exhaust coupling for removing smoke and unpleasant fumes e.g. from cutting and grinding tasks. Dust in the vicinity is not swirled up.
Machines with 3 motors.....84.31.0009
 - Power outlet with automatic start/stop function and post-suction for pneumatic tools and vacuuming from machines. The vacuum cleaner starts automatically when the electric tool is started. When the electric tool is stopped, the vacuum cleaner will continue to vacuum for about 10 seconds (post-suction).
(Requires 380V/16 A)80.31.0063
 - Suction hoses can be supplied in customized dimensions.